

The (male) visible and the (female) invisible.

Remarks to the cooperation of Lilly Reich and Ludwig Mies van der Rohe using the example of the Tugendhat House in  
Brno

Ivo Hammer, Vienna

ILLINOIS TECH

Interiors: Lilly Reich and Mies van der Rohe

February 4, 2021

Lilly Reich – Ludwig Mies van der Rohe



June 16, 1885, Berlin – December 14, 1947



March 27, 1886 , Aachen/Germany – August 17, 1969, Chicago

## Lilly Reich (1885-1947): Before the cooperation with Ludwig Mies van der Rohe (–1926)



Frankfurt International Fairs, Werkbund House, c. 1922



Lilly Reich: 1926 Exhibition Frankfurt Internat. Fair „From Fiber to Fabric“. 1: Textiles, their Production and Commerce, 2: Characteristics of Textiles, 3: Examination of Textile Fibers, Threads and Looms

Training in „Kurbel“ embroidery (with a sewing machine)

1908-1911: Vienna, Wiener Werkstätte of Josef Hoffmann

Study with Else Oppler-Legband (Höhere Fachschule für Dekorationskunst, Berlin)

1911: First commissions: Interiors and furnishing of the Youth Center of Berlin Charlottenburg; window-dressing WERTHEIM, Berlin

1912 Member of Deutscher Werkbund

Several Exhibitions: Cologne, Berlin (fashion, furniture)

1920 member of Directors Council; 2 exhibitions: Berlin: Craftmanship in Fashion; Newark Museum/NJ: The Applied Arts (with O. Baur, R. Schulz)

1922 LR, „Issues in Fashion“, in: Die Form 5/1922, 7-9

1922-1926: **Director of the Werkbund House of the Frankfurt International Fair**

1926 Exhibition Frankfurt Internat. Fair: „From Fiber to Fabric“

1926: Moved back to Berlin



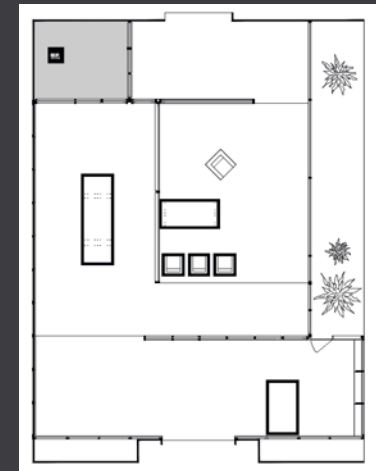
Lilly Reich: Cooperation with Ludwig Mies van der Rohe: 1926 – 1939:  
Stuttgart 1927, Werkbund Exhibition „The Dwelling“. Design and organization



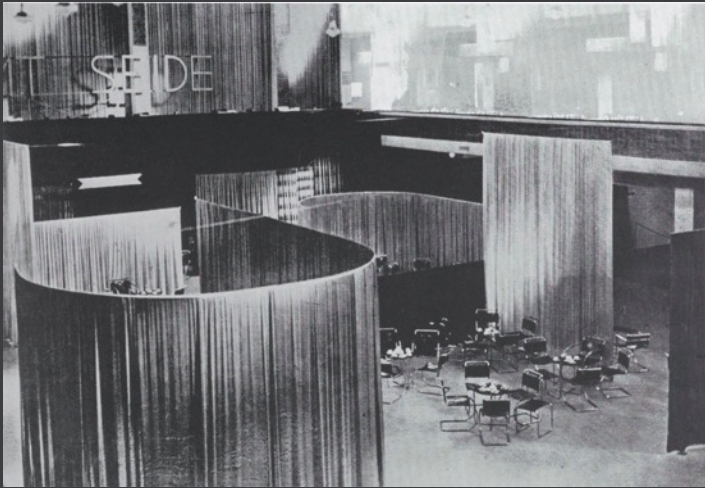
1926 Apartment Mies van der Rohe Berlin (furniture)

1925-1927 Wolf House Guben (furniture)

1927 Werkbund Exhibition „The Dwelling“, Stuttgart, July 23 - October 9:  
Weißenhofsiedlung, Block Mies, apartments 8\_12; (upon suggestion of  
MvdR) organisation and design of 8 areas of exhibition (industrial products,  
kitchen models,, textiles, wallpaper or textile designs from the BAUHAUS,  
including typography by Willi Baumeister and the „Frankfurt Kitchen“ of  
Margarete Schütte\_Lihotsky; Linoleum Works and Glass Hall together with  
MvdR (glass walls in various texture and color, white Linoleum)



Lilly Reich: Cooperation with Ludwig Mies van der Rohe: 1926 – 1939  
1927 Berlin Exhibition „The Women’s Fashion“, Velvet and Silk Café (21.9.-16.10.)



velvet (black, orange, red), silk (gold, silver, black und lemon-yellow); floating wall (together with MvdR)

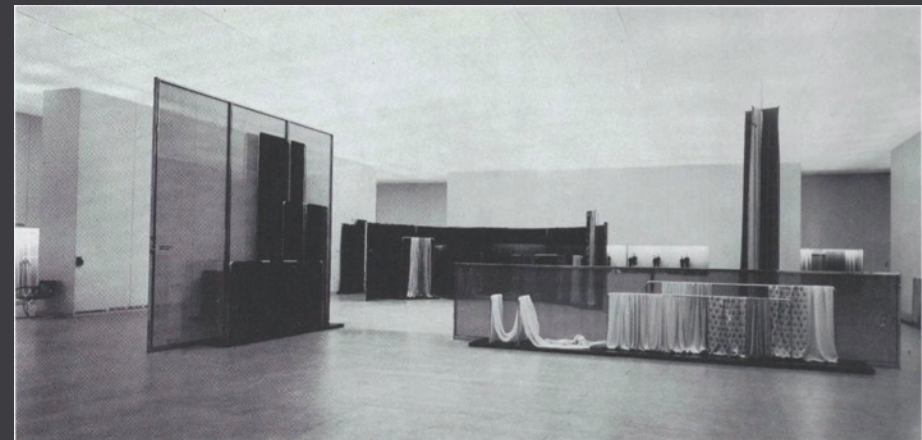
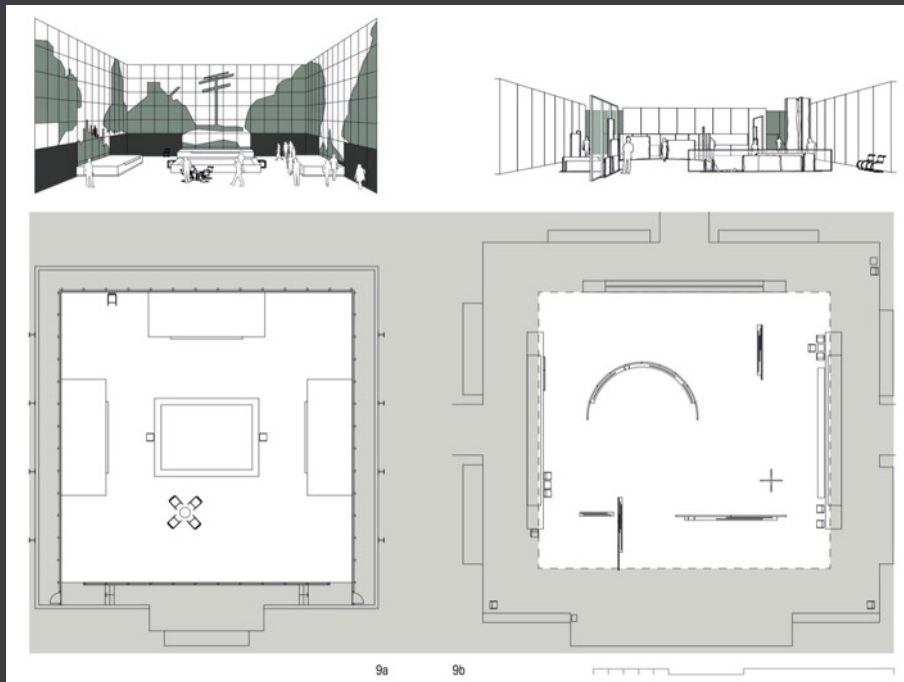




Lilly Reich: Cooperation with Ludwig Mies van der Rohe: 1926 – 1939

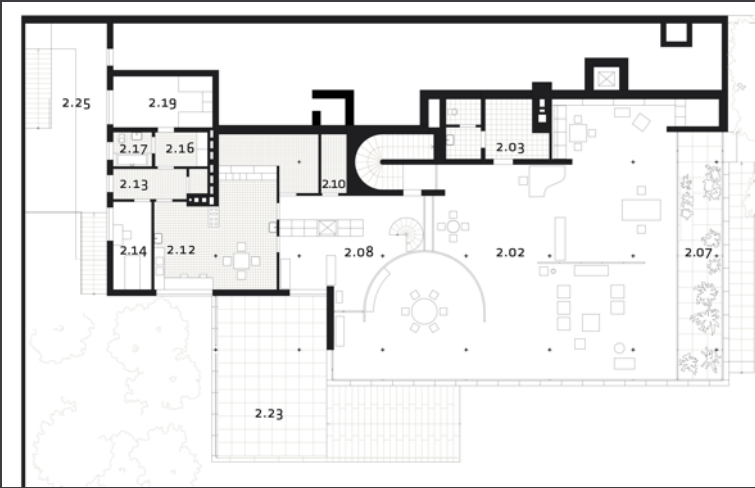
1929: Barcelona Internat. Exhibition. Lilly Reich Artistic Director of all 25 zones presented by Germany

May 20, 1929 – January 15, 1930

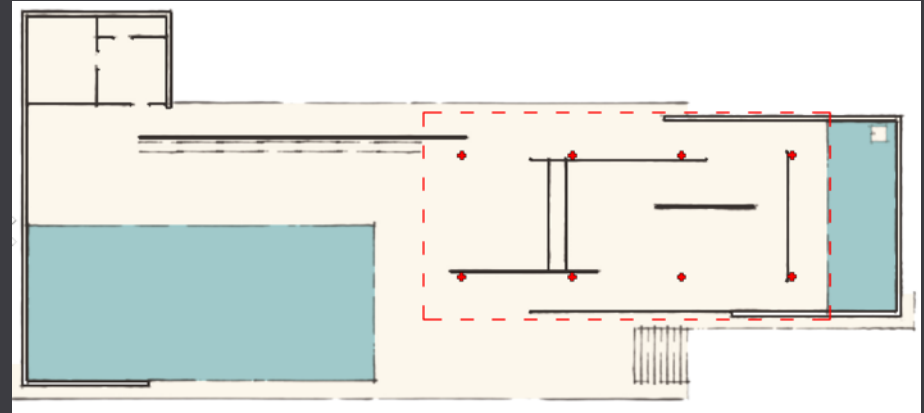


Lilly Reich (collaboration with Ludwig Mies van der Rohe), Internat. Exposition Barcelona, 1929, (left): Plan and view of the exposition in the pavillion of the German subministry of electricity, (right): Palace of the Textile Art, silk display

Lilly Reich (collaboration with Ludwig Mies van der Rohe), Internat. Exposition Barcelona, 1929, Palace of the Textile Art, silk display



Tugendhat House, plan, main floor



Tugendhat House,





Ludwig Mies van der Rohe und Lilly Reich, Barcelona Pavillion, 1928-1929  
(copy 1986)



Ludwig Mies van der Rohe und Lilly Reich, Haus Tugendhat, 1928-1929  
(furniture: copies 2011)



# Tugendhat House



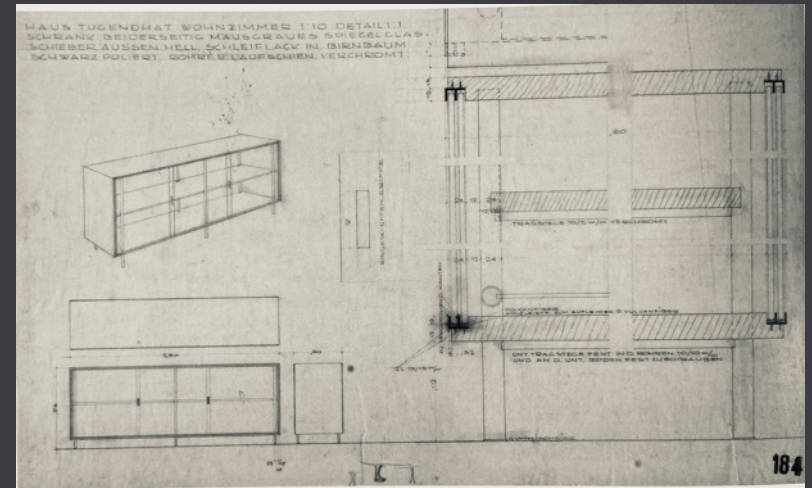
Bookshelf, designed by Lilly Reich



Sleeping room of Fritz Tugendhat, Photo: Fritz Tugendhat, ca. 1934



Glas-Buffer





Privatbesitz Wien



Haus Tugendhat, Foto: Rudolf de Sandalo, 1931

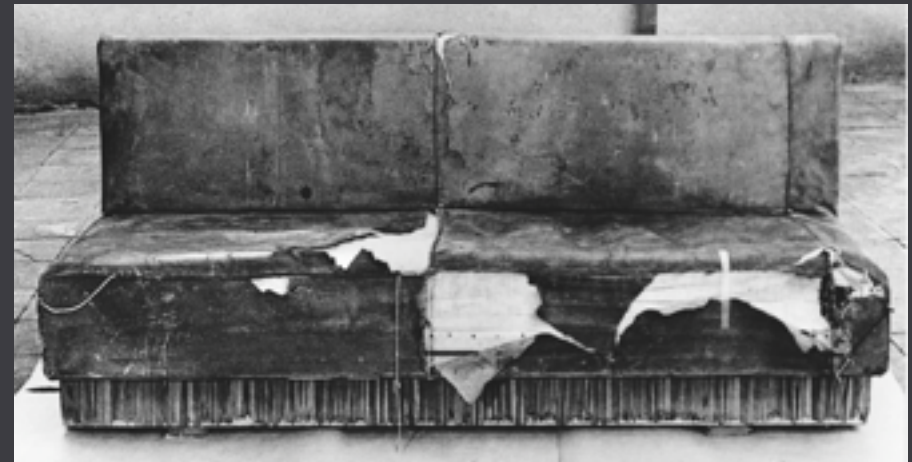
## Tugendhat House



Bahausmuseum Weimar, Dauerleihgabe aus Privatbesitz



Haus Tugendhat, Bibliothek, Sitzecke mit Sofa, Brno-Stühlen und Bridge-Tisch



Sofa der Bibliothek des Hauses Tugendhat, derzeit Privatbesitz Jan Sapák, Brno





Bank vor der Onyxwand, Museum der Stadt Brünn, Depot. Photo: Ivo Hammer, 2014



Haus Tugendhat, Bibliothek, Schreibtisch, Photo: Rudolf de Sandalo.  
Teppich Alen Müller-Hellwig, Lübeck, nach dem Design von Lilly Reich







## Tugendhat House: Glass Walls, Curtain Walls



Curtain walls



Glass walls

Colors:  
Colors of the materials – Accents of bright colors





Lilly Reich: Glass Sideboard (display cabinet)



Tugendhat House, living room, view to south, nighttime, photo: Rudolf de Sandalo, 1931

